

assist

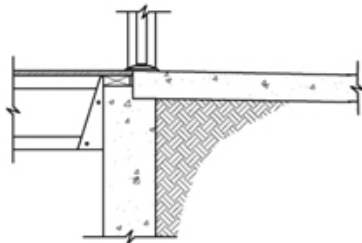
A COMMUNITY DESIGN CENTER

218 EAST 500 SOUTH
SALT LAKE CITY, UTAH 84111

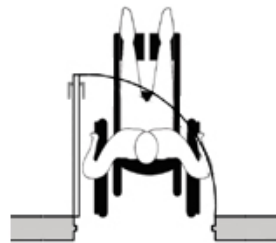
Essential Visitability Features



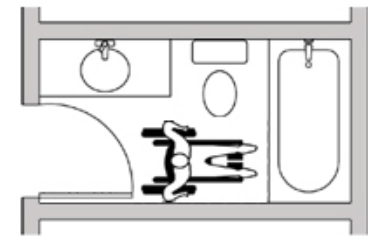
No-Step Entry



Adequate Doorways



Usable Bathroom





Easy for Families



Easy for Seniors



Easy for All



Visiting Family



Visiting Friends



Visiting All Homes

No-Step Entry



No-Step with Basement



No-Step on Slab



No-Step from Garage

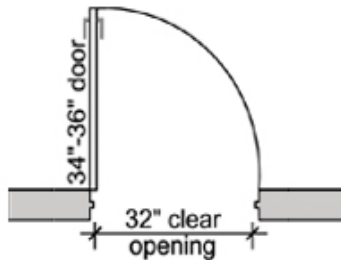
“The EasyLiving Home concept gives all of us an opportunity to take housing designs to the next level at a very minimal cost, At the same time it provides a more livable and more visitable home for everyone. I would encourage all of those who work to provide housing for the citizens of the world to incorporate these life enhancing design features in their homes.”

Miller Fuller, President, Habitat for Humanity
www.habitat.org

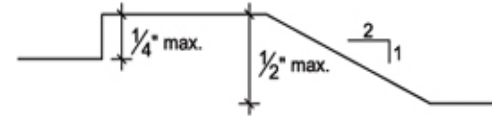
Adequate Doorways



Clear Passage Space



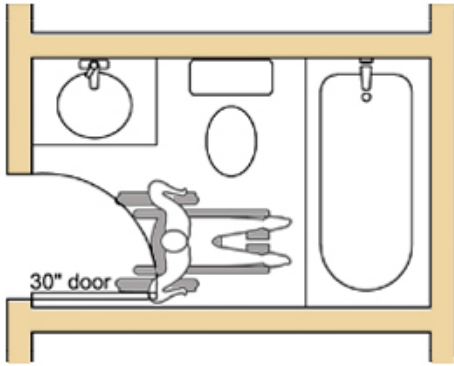
Low Threshold



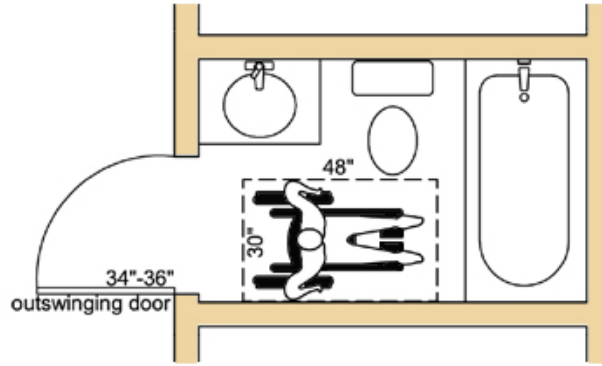
"I realized that widespread change in housing construction depends on continuously focusing on the few barriers that create by far the most harm—lack of zero step entrances, narrow interior doors, and lack of access to a bathroom."

Eleanor Smith, Founder and Director, Concrete Change
www.concretechange.org

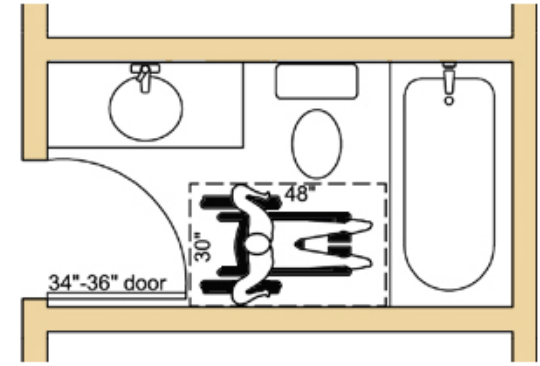
Usable Bathrooms



Typical 5' x 8' Bathroom
(Not Usable)



5' x 8' Bathroom with
Modified Doors



5' x 9' Bathroom

“Visitability, a more relaxed standard of accessibility, extends the welcome of our homes to friends and family with permanent or temporary disabilities and also makes it easier to remain in your home as you age, without expensive remodeling.”

Roger Borgenicht, Director, Assist Inc
www.assistutah.org